

IMAGE PERFORMANCE

LCD Panel	Active Matrix With IPS. LED Backlight
Image Size (W x H)	14.8 x 11.9 inches (376 x 301 mm)
Viewing Area (Diagonal)	19 inches (483 mm)
Pixel Pitch	0.294 mm
Resolution (H x V)	1280 x 1024 (SXGA), 5:4 Aspect Ratio
Luminance	330 cd/m ² (Typical)
Color Calibration	NDS Color Correction Technology (CCT)
Contrast Ratio	900:1
Number of Colors	16.8 Million
Color Gamut	BT.709 or SMPTE-C
Viewing Angle	178° (Horizontal & Vertical)
Response Time	7 ms (Typical)
Display Latency	Less than 1 Frame (up to 16 ms)

GENERAL

Input Power Requirements	24 Volts DC (Minimum 12.0 Volts)
Power Consumption	40 Watts (typical)
Dimensions (W x H x D)	18 x 16 x 4 inches (465 x 400 x 98 mm)
Weight	10 lbs (4.5 Kg)
Temperature	Operating: 0 to +40°C (+32 to +104°F) Storage: -20 to +50°C (-4 to +122°F)
Humidity	Operating: 20 – 85% RH Storage: 5 – 85% RH
Mounting	100 mm VESA

STANDARD DISPLAY PART NUMBER

90R0056 - Radiance G2 19"

INCLUDED / OPTIONAL ACCESSORIES

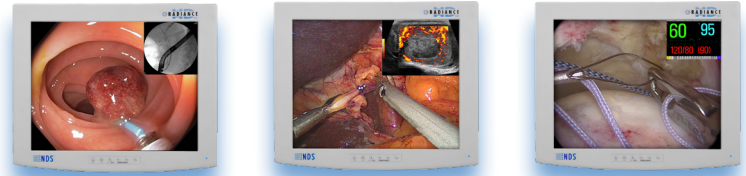
Included: Power Supply, US and EU Power Cords, AC Cord, Video Cables - DVI, VGA, S-Video, 2 x BNC, Printed User Manual, Multi-Language CD
Optional: Display Stand (26B0078), 30 ft. Power Extension Cable kit (90I0017)

USER CONTROLS - ON-SCREEN MENU

Quick Input Select, Primary / Secondary Input Select, MMI Window Size / Swap, CCT Setting, Brightness, Contrast, Hue, Saturation, Color Temp. Presets, Gamma Presets, "PACS" Gamma Setting, Sharpness, RGB Gain, Backlight Level, Horizontal & Vertical Position, Phase, Frequency, DPMS, Auto-Source Select, Scaling, Overscan, Five Programmable User / Modality Settings Profiles

INPUT FORMATS

Format	Input (Digital)	Input (Analog)	Horizontal Frequency (kHz)
576/50i (PAL)	SDI, DVI	Comp, S-Video, RGBS, YP _b P _r	15.625
480/60i (NTSC)	SDI, DVI	Comp, S-Video, RGBS, YP _b P _r	15.734
576/50p	DVI	SOG, RGBS, YP _b P _r	31.250
480/60p	DVI	SOG, RGBS, YP _b P _r	31.469
720/50p	HD-SDI, DVI	HD-RGBS, HD-YP _b P _r	37.500
720/60p	HD-SDI, DVI	HD-RGBS, HD-YP _b P _r	45.000
1080/50i	HD-SDI, DVI	HD-RGBS, HD-YP _b P _r	28.125
1080/60i	HD-SDI, DVI	HD-RGBS, HD-YP _b P _r	33.750
1080/50p	DVI	HD-RGBS, HD-YP _b P _r	56.2
1080/60p	DVI	HD-RGBS, HD-YP _b P _r	67.3



INPUTS

DVI (1)	DVI-D
DVI (2)	DVI-I (2)
3G-SDI (1)	BNC, 75 Ω
3G-SDI (2)	BNC, 75 Ω
VGA	HD-15, or BNC x 5, or DVI-I (2), 0.7 Vp-p ± 6db, 75 Ω
SOG (1)	BNC, 75 Ω
SOG (2)	BNC, 75 Ω
HD-RGBS, RGBS	BNC x 5, or DVI-I (2), 0.7 Vp-p ± 6db, 75 Ω
HD-YP _b P _r / YP _b P _r	BNC x 5, or DVI-I (2), 0.7 Vp-p ± 6db, 75 Ω
S-Video	DIN-4, or BNC x 2, 0.7 Vp-p +6/-3db, 75 Ω
Composite	BNC, 0.7 Vp-p +6/-3db, 75 Ω

CONNECTIVITY

OUTPUTS

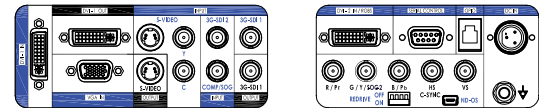
DVI (1)	DVI-D
3G-SDI (1)	BNC
HD-RGBS, RGBS	BNC x 5, or DVI-I (2)
HD-YP _b P _r / YP _b P _r	BNC x 5, or DVI-I (2)
S-Video	DIN-4

CONTROL INPUTS

Serial Remote	D-sub 9-pin, RS-232C
GPIO	RJH-4, TTL
ND-OS	Mini-USB

COMPLIANCE & CERTIFICATIONS ANSI/AAMI ES60601-1, CAN/CSA C22.2 No. 60601-1, Conflict Minerals, FCC Class B, EN60601-1, EN60601-1-2, CE, MDD 93/42/EEC, 2007/47/EC, REACH, RoHS-2, WEEE, Class I Medical Device, CCC.

INPUT / OUTPUT CONNECTOR PANEL



MULTI-MODALITY INPUT COMBINATIONS (FULL MMI)

PRIMARY INPUT	SECONDARY INPUT									
	DVI1	3G-SDI 1	DVI2	3G-SDI 2	YP _b P _r /SOG2	RGBS	Y/C	Comp.	SOG1	VGA
DVI 1		•	•	•	•	•	•	•	•	•
3G-SDI 1	•		•	•	•	•	•	•	•	•
DVI 2	•	•		•	N/A	N/A	•	•	•	•
3G-SDI 2	•	•	•		•	•	•	•	•	•
RGBS	•	•	N/A	•			•	•	•	•
YP _b P _r /SOG 2	•	•	N/A	•			•	•	•	•
Y/C	•	•	•	•	•			N/A	•	•
Comp.	•	•	•	•	•	•	N/A			•
SOG 1	•	•	•	•	•	•	•			N/A
VGA	•	•	•	•	•	•	•	•	N/A	



ISO 9001:2008 and ISO 13485:2003;
FDA Registration # 2954921

Global Headquarters

www.ndssi.com
5750 Hellyer Ave
San Jose, CA 95138
USA
+1 408 776 0085
info@ndssi.com

Europe

Novanta Europe GmbH
Münchener Strasse 2A
82152 Planegg
Germany
+49 89 31 707 100
info.novanta-europe@novanta.com

Asia Pacific

Novanta Japan
East Square Omori
6-20-14 Minamioi, Shinagawa-ku
Tokyo 140-0013
Japan
+81 3 5753 2466
info@ndssi.jp

Oriental Media Center
Suite 2302, Tower C
No.4, Guang Hua Road
Chao Yang District
Beijing, 100026
China
+86 10 8559 7859
info@ndssi.com.cn